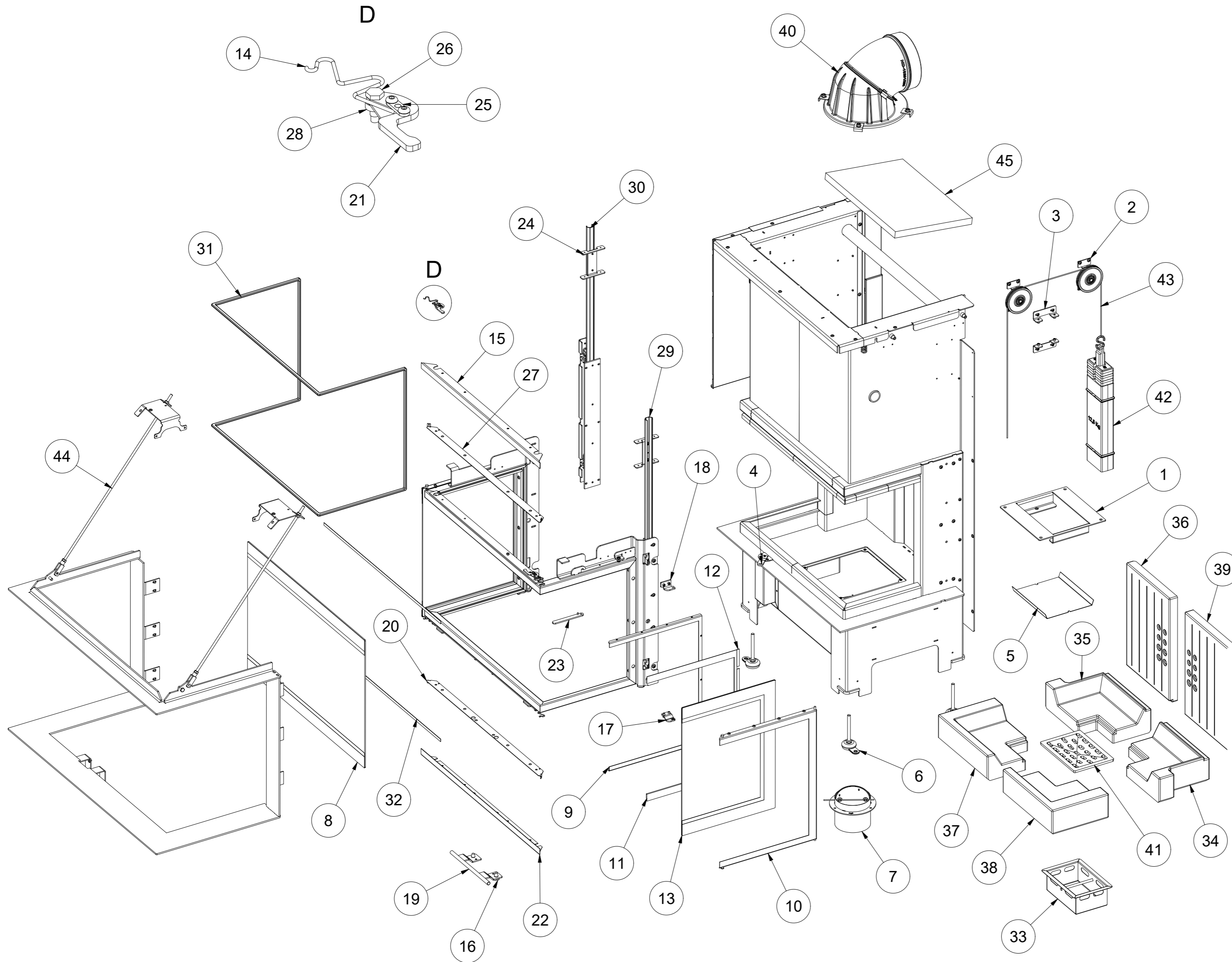


R3/80/40
R3/60/40
R3/50/50



Position	number	name	Part No. / Standards
1	1	NB-C-04-00-01	NB-C_Termotec 1 right
2	1	NB-C-04-00-04	NB-C_Termotec 1 left
3	1	NB-C-04-00-03	NB-C_Termotec left-hand vertical
4	1	NB-C-04-00-02	NB-C_Termotec 2 left
5	1	NB-C-04-00-05	NB-C_Termotec 2 right
6	1	NB-C-04-00-06	NB-C_Termotec right-hand vertical
7	1	NB-C-02-02-06	NB-C_Frame inside P
8	1	NB-C-02-02-02	NB-C_door frame assembly P
9	1	Side door rope 1,22 mb	FD5115F
10	1	Side door rope - distance 0,46 mb	CORD/W/P/K/10X3
11	1	S/4/G/373X509/NBC/800/400/B	S/4/G/373X509/NBC/800/400/B
12	1	S/4/G/783X509/NBC/800/400/F/NON/LOGO	S/4/G/783X509/NBC/800/400/F/NON/LOGO
13	4	NB-U-02-00-09	NB-U_Tightening spring
14	1	NB-C-02-00-11	NB-C_List GLASS top
15	4	G01-15.00.03	Rubber bumper
16	1	NB-U-02-00-03	NB-U_Bottom right-hand door handle
17	1	NB-U-02-00-05	NB-U_Upper right hand door handle
18	1	HANDLE_NB_ROCOSSA	HANDLE_NB_ROCOSSA
19	1	NB-C-02-00-07	NB-C_List spring bottom
20	4	NB-U-MIKO-02-00-08	NB-U_MIKO_Side door handle
21	1	NB-C-02-00-12	NB-C_List GLASS lower
22	1	NB-U-MIKO-02-06-00	NB-U_MIKO_Lock with right pin
23	2	NB-U-02-00-01	NB-U_Regulation - guideway
24	4	NB-U-02-08-00	NB-U_Type kit
25	4	NB-C-02-11-01	NB-C_The door handle fixing screw
26	1	NB-C-02-00-08	NB-C_List springs top
27	1	NB-C-02-00-15	NB-C_Holder holder holder holder
28	1	NB-CR-02-13-00	NB-CR_guide assembly L
29	1	NB-CR-02-12-00	NB-CR_guide set P
30	1	Door rope 3.83 mb	SZNUR/W/O/12
31	1	Window rope front 1.56 mb	CORD/W/P/K/10X1
32	4	NB-CR-01-05-00	NB-CR_Wheel plate assembly
33	4	NB-U-MIKO-01-00-01	NB-U_MIKO_Regulation - body
34	1	NB-CR-01-00-05	NB-CR_Slide - handle
35	1	NB-C-01-00-07	Ashtray stop
36	4	GN 32-Levelling feet with fixing lug rubber black	Levelling foot GN 32-50-M10-100-A1-S (0)
37	1	Nadia-6551 - Throttle valve above kpl	NB-C7_The throttle valve is a combination of the following
38	1	Goat AB2 - Ashtray Cpl.	AB2-13-00-00
39	1	Exhaust gas outlet	ND-03-00-00
40	1	Blanka - Grid	07BL-08-00-00
41	2	Loader_12.5-15Kg without logo	OG-12,5-15 WITHOUT LOGO
42	2	STRING_08-1210_CAUSHA	Cable 3 mm L=1210
43	1	Blenda 5mm NBC 800 400	BLENDA/NBC/800/400/00-00
44	1	NB-CR_deflector	NB-CR-00-00-10